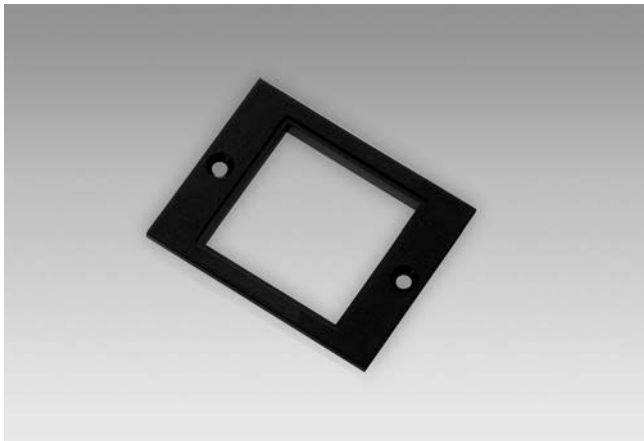


Accessories

Adaptor plates

Adaptor plate face 60 x 75 mm



Description

Adaptor plate for screw mount,
face dimensions 48 x 48 mm.
Cutout 50.5 x 50.5 mm.

Part number

10127669 Adaptor plate for screw mount,
face 60 x 75 mm (Z 118.033)

Suitable for

NE210, NE216

Dimensions

