

**Overview**

- light barrier
- 60 ... 1000 mm
- pulsed PinPoint LED
- push-pull
- Teach-in and IO-Link
- connector M12 4 pin
- -25 ... 60 °C
- IP 68/69K & proTect+



Picture similar



**Technical data**

**General data**

Type	Light barrier
Special type	Washdown design
Version	Transparency object detection
Light source	Pulsed PinPoint LED
Background position Sde	60 ... 1000 mm
Scanning range Sa	100% ... 85% Sde
Minimal signal attenuation	10 % / 20 % / 30 %
Power on indication	LED green
Light indicator	LED yellow
Sensing distance adjustment	Teach-in and IO-Link
Wave length	630 nm
Suppression of reciprocal influence	Yes
Alignment optical axis	< 1°
Approvals/certificates	Ecolab

**Electrical data**

Response time / release time	0,25 ... 0,6 ms
Voltage supply range +Vs	10 ... 30 VDC

**Electrical data**

Current consumption max. (no load)	40 mA
Current consumption typ.	30 mA
Voltage drop Vd	< 3 VDC
Output function	Light / dark operate
Output circuit	Push-pull
Output current	< 100 mA
Short circuit protection	Yes
Reverse polarity protection	Yes

**Mechanical data**

Width / diameter	20,2 mm
Height / length	47,2 mm
Depth	37,7 mm
Type	Rectangular
Housing material	Stainless steel 1.4404 (V4A)
Front (optics)	PMMA
Connection types	Connector M12 4 pin

**Ambient conditions**

Protection class	IP 68/69K & proTect+
Operating temperature	-25 ... +60 °C

# O500W.SP.T-GW1J.PVO/B005

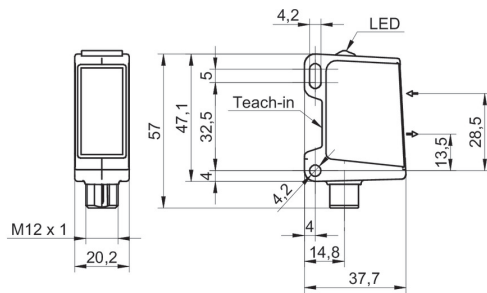
SmartReflect Light barriers - washdown

Article number: 11136924

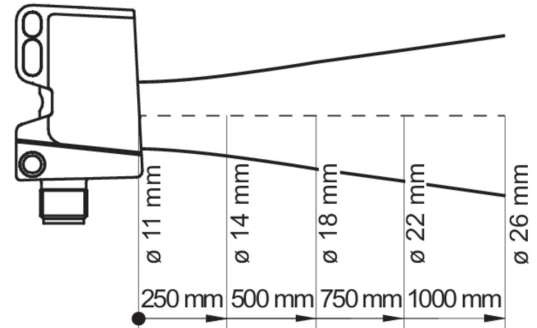
## Remarks

- qTeach
- IO-Link: V1.1, filter functions, qTeach lock adjustable
- Signal attenuation adjustable
- Response time / release time: depending on the signal strength

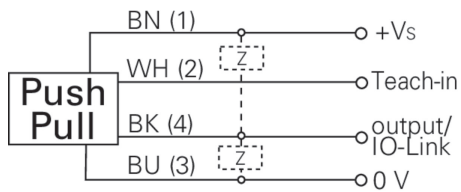
## Dimension drawing



## Beam characteristic (typically)



## Connection diagram



## Pin assignment

