

Overview

- emitter
- through beam sensor
- 40 m
- pulsed red laser diode
- cable 4 pin, 2 m
- -10 ... 60 °C
- IP 67



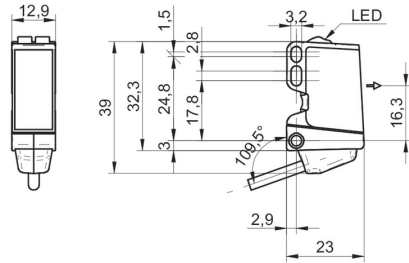
Picture similar



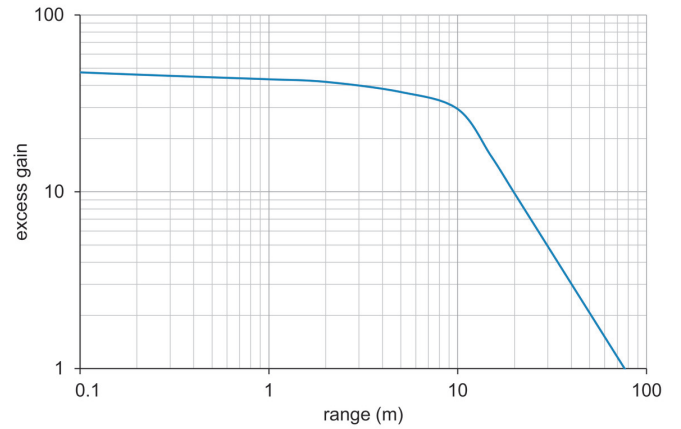
Technical data

General data		Electrical data	
Type	Through beam sensor	Current consumption typ.	25 mA
Emitter / receiver	Emitter	Reverse polarity protection	Yes
Light source	Pulsed red laser diode	Mechanical data	
Actual range Sb	40 m	Width / diameter	12,9 mm
Nominal range Sn	75 m	Height / length	32,3 mm
Power on indication	LED green	Depth	23 mm
Laser class	1	Type	Rectangular
Distance to focus	Parallel beam	Housing material	Plastic (ASA, PMMA)
Wave length	656 nm	Front (optics)	PMMA
Alignment optical axis	< 2°	Connection types	Cable 4 pin, 2 m
Electrical data		Ambient conditions	
Voltage supply range +Vs	11 ... 30 VDC	Operating temperature	-10 ... +60 °C
Current consumption max. (no load)	30 mA	Protection class	IP 67

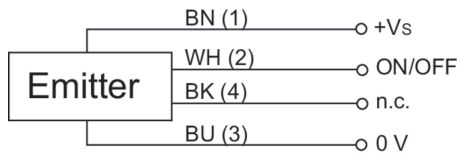
Dimension drawing



Excess gain curve



Connection diagram



Laser warning

**CLASS 1 LASER
PRODUCT**

IEC 60825-1/2014
Complies with 21 CFR 1040.10 and
1040.11 except for conformance with
IEC 60825-1 Ed. 3., as described in
Laser Notice No. 56, dated May 8, 2019

Beam characteristic (typically)

