

# OSDK 14D9001/S35A

Through beam sensors - standard

Article number: 11001329

## Overview

- emitter
- through beam laser sensor
- 8 m
- pulsed red laser diode
- connector M8 4 pin
- 10 ... 50 °C
- IP 67



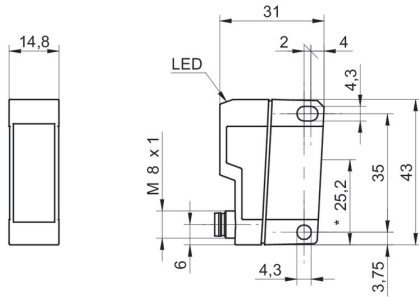
Picture similar



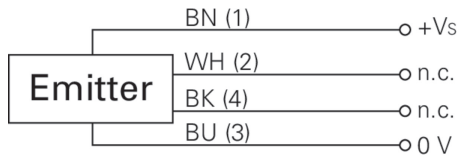
## Technical data

General data		Electrical data	
Type	Through beam laser sensor	Current consumption typ.	25 mA
Emitter / receiver	Emitter	Reverse polarity protection	Yes
Light source	Pulsed red laser diode	Mechanical data	
Actual range Sb	8 m	Width / diameter	14,8 mm
Nominal range Sn	10 m	Height / length	43 mm
Power on indication	LED green	Depth	31 mm
Laser class	1	Type	Rectangular
Distance to focus	Parallel beam	Housing material	Plastic (ASA, MABS)
Wave length	650 nm	Front (optics)	PMMA
Electrical data		Connection types	Connector M8 4 pin
Voltage supply range +Vs	10 ... 30 VDC	Ambient conditions	
Current consumption max. (no load)	35 mA	Operating temperature	10 ... +50 °C
		Protection class	IP 67

**Dimension drawing**



**Connection diagram**



**Laser warning**

**CLASS 1 LASER  
PRODUCT**

IEC 60825-1/2014  
Complies with 21 CFR 1040.10 and  
1040.11 except for conformance with  
IEC 60825-1 Ed. 3., as described in  
Laser Notice No. 56, dated May 8, 2019

**Beam characteristic (typically)**

