

**Overview**

- Most secure object detection due to the barrier principle
- Fixed preset for the simplest commissioning
- Quick mounting by means of M3 threaded bushes made of stainless steel



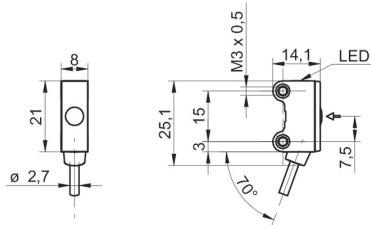
Picture similar



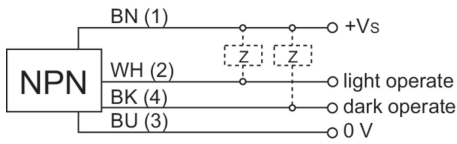
**Technical data**

General data		Electrical data	
Type	Through beam sensor	Voltage drop Vd	< 2 VDC
Emitter / receiver	Receiver	Output function	Light / dark operate
Actual range Sb	5 m	Output circuit	NPN complementary
Nominal range Sn	6 m	Output current	< 50 mA
Smallest object recognizable typ.	5 mm (0,5 mm with aperture)	Short circuit protection	Yes
Alignment / soiled lens indicator	Flashing output indicator	Reverse polarity protection	Yes
Output indicator	LED yellow	Mechanical data	
Power on indication	LED green	Width / diameter	8 mm
Sensitivity adjustment	No	Height / length	25,1 mm
Suppression of reciprocal influence	Yes	Depth	14,1 mm
		Type	Rectangular
		Mechanical mounting	Threaded sleeves M3 (stainless steel)
		Housing material	Plastic (ASA, PMMA)
		Front (optics)	PMMA
		Connection types	Cable 4 pin, 2 m
		Cable characteristics	PVC / PVC 4 x 0,08 mm <sup>2</sup>
Electrical data		Ambient conditions	
Response time / release time	< 0,5 ms	Operating temperature	-25 ... +50 °C
Voltage supply range +Vs	10 ... 30 VDC	Protection class	IP 67
Current consumption max. (no load)	20 mA (@ 30 VDC)		
Current consumption typ.	16 mA (@ 24 VDC)		

**Dimension drawing**



**Connection diagram**



**Excess gain curve**

