

## OPDM 16P5102

Retro-reflective sensors - standard

Article number: 10239621

### Overview

- retro-reflective laser sensor
- 11 m
- pulsed red laser diode
- PNP
- no
- cable 4 pin, 2 m
- -10 ... 50 °C
- IP 67



Picture similar



### Technical data

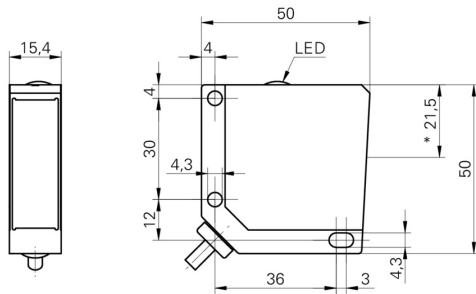
General data		Electrical data	
Type	Retro-reflective laser sensor	Current consumption typ.	60 mA
Light source	Pulsed red laser diode	Voltage drop Vd	< 2 VDC
Actual range Sb	11 m	Output function	Light / dark operate
Nominal range Sn	12 m	Output circuit	PNP
Repeat accuracy	< 1,5 mm at 0 ... 0,5 m	Output current	< 200 mA
Polarization filter	Yes	Short circuit protection	Yes
Alignment / soiled lens indicator	Flashing light indicator	Reverse polarity protection	Yes
Light indicator	LED yellow	Mechanical data	
Sensitivity adjustment	No	Width / diameter	15,4 mm
Laser class	1	Height / length	50 mm
Distance to focus	400 mm	Depth	50 mm
Wave length	650 nm	Type	Rectangular
Electrical data		Housing material	Die-cast zinc
Response time / release time	< 0,1 ms	Front (optics)	Glass
Voltage supply range +Vs	10 ... 30 VDC	Connection types	Cable 4 pin, 2 m
Current consumption max. (no load)	70 mA	Ambient conditions	
		Operating temperature	-10 ... +50 °C
		Protection class	IP 67

# OPDM 16P5102

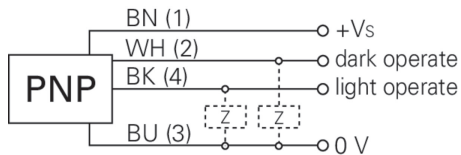
Retro-reflective sensors - standard

Article number: 10239621

## Dimension drawing



## Connection diagram



## Laser warning

**CLASS 1 LASER  
PRODUCT**

IEC 60825-1/2014

Complies with 21 CFR 1040.10 and 1040.11 except for conformance with IEC 60825-1 Ed. 3., as described in Laser Notice No. 56, dated May 8, 2019

## Beam characteristic (typically)

