

Overview

- intensity difference
- 10 ... 250 mm
- pulsed red laser diode
- push-pull
- Teach-in and IO-Link
- cable 4 pin, 2 m
- -10 ... 60 °C
- IP 67



Picture similar



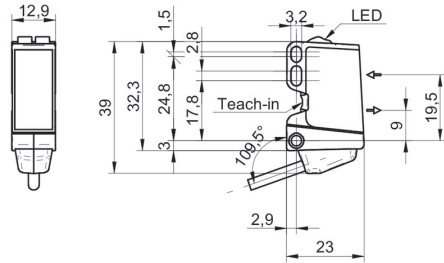
Technical data

General data		Electrical data	
Type	Intensity difference	Current consumption typ.	25 mA
Light source	Pulsed red laser diode	Voltage drop Vd	< 2,5 VDC
Sensing distance Tw	10 ... 250 mm	Output function	Light / dark operate
Repeat accuracy	< 0,1 mm at laser focus	Output circuit	Push-pull
Power on indication	LED green	Output current	< 100 mA
Light indicator	LED yellow	Short circuit protection	Yes
Sensing distance adjustment	Teach-in and IO-Link	Reverse polarity protection	Yes
Laser class	1	Mechanical data	
Distance to focus	80 mm	Width / diameter	12,9 mm
Wave length	656 nm	Height / length	32,3 mm
Suppression of reciprocal influence	Yes	Depth	23 mm
Alignment optical axis	< 2°	Type	Rectangular
Electrical data		Housing material	Plastic (ASA, PMMA)
Response time / release time	< 0,1 ms	Front (optics)	PMMA
Voltage supply range +Vs	11 ... 30 VDC	Connection types	Cable 4 pin, 2 m
Current consumption max. (no load)	30 mA	Ambient conditions	
		Operating temperature	-10 ... +60 °C
		Protection class	IP 67

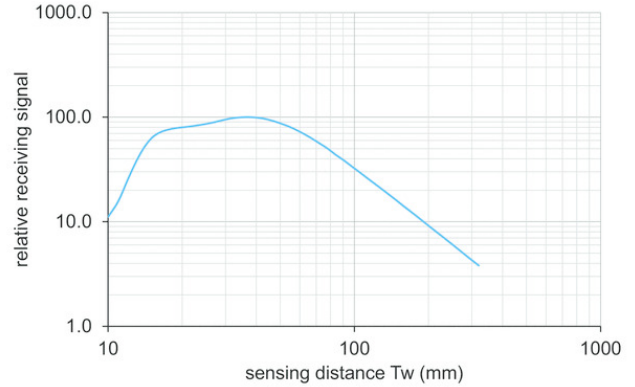
Remarks

- qTeach
- IO-Link: V1.1, filter functions, qTeach lock adjustable

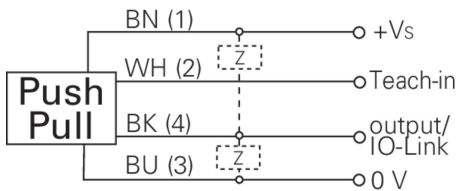
Dimension drawing



Relative receiving signal



Connection diagram



Laser warning

**CLASS 1 LASER
PRODUCT**

IEC 60825-1/2014
Complies with 21 CFR 1040.10 and 1040.11 except for conformance with IEC 60825-1 Ed. 3., as described in Laser Notice No. 56, dated May 8, 2019

Beam characteristic (typically)

