

Overview

- distance measuring
- 30 ... 250 mm
- pulsed red laser diode
- push-pull
- Teach-in and IO-Link
- connector M8 4 pin
- -10 ... 60 °C
- IP 67



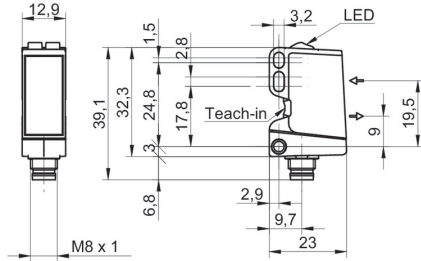
Picture similar



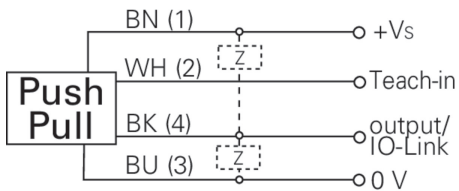
Technical data

General data		Electrical data	
Type	Distance measuring	Voltage drop Vd	< 2,5 VDC
Version	IO-Link measuring	Output circuit	Push-pull
Measuring distance Sd	30 ... 250 mm	Output current	< 100 mA
Focal distance	400 mm	Short circuit protection	Yes
Adjustment	Teach-in and IO-Link	Reverse polarity protection	Yes
Power on indication	LED green	Communication interface	
Light indicator	LED yellow	Interface	IO-Link V1.1
Resolution	500 ... 10000 µm	Baud rate	230,4 kBaud (COM 3)
Linearity error	± 1,5 ... 12,5 mm	Cycle time	≥ 0,6 ms
Beam type	Point	Process data length	3 Byte
Suppression of reciprocal influence	Yes	Process data structure	Bit 0 = BDC1 Bit 2 = quality Bit 3 = alarm Bit 8-23 = 16 Bit measurement
Alignment optical axis	< 2°	Mechanical data	
Temperature drift	< 0,2 % Sde/K	Width / diameter	12,9 mm
Light Source		Height / length	32,3 mm
Light source	Pulsed red laser diode	Depth	23 mm
Wave length	656 nm	Type	Rectangular
Laser class	1	Housing material	Plastic (ASA, PMMA)
Electrical data		Front (optics)	PMMA
Response time / release time	< 0,25 ms	Connection types	Connector M8 4 pin
Voltage supply range +Vs	11 ... 30 VDC	Ambient conditions	
Current consumption max. (no load)	30 mA	Operating temperature	-10 ... +60 °C
		Protection class	IP 67

Dimension drawing



Connection diagram

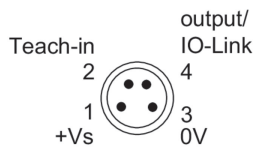


Laser warning

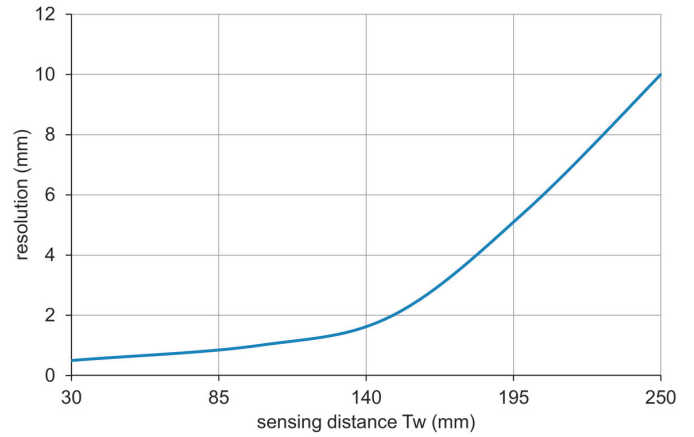
**CLASS 1 LASER
PRODUCT**

IEC 60825-1/2014
Complies with 21 CFR 1040.10 and
1040.11 except for conformance with
IEC 60825-1 Ed. 3., as described in
Laser Notice No. 56, dated May 8, 2019

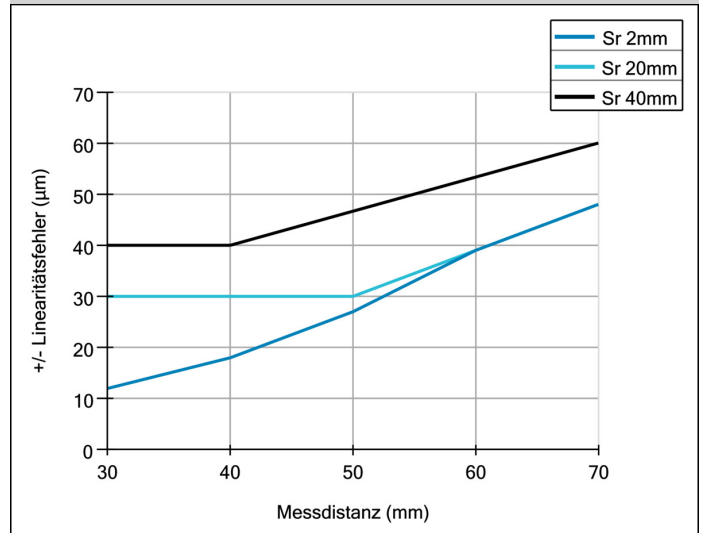
Pin assignment



Resolution



Linearity error



Beam characteristic (typically)

