

**Overview**

- distance measuring
- 30 ... 300 mm
- pulsed PinPoint LED
- push-pull
- Teach-in and IO-Link
- connector M8 4 pin
- -25 ... 60 °C
- IP 67



Picture similar



**Technical data**

**General data**

Type	Distance measuring
Version	IO-Link measuring
Measuring distance Sd	30 ... 300 mm
Adjustment	Teach-in and IO-Link
Power on indication	LED green
Light indicator	LED yellow
Resolution	500 ... 5000 µm
Linearity error	± 1,5 ... 15 mm
Beam type	Point
Suppression of reciprocal influence	Yes
Alignment optical axis	< 2°
Temperature drift	< 0,2 % Sde/K

**Light Source**

Light source	Pulsed PinPoint LED
Wave length	630 nm

**Electrical data**

Response time / release time	< 0,49 ms
Voltage supply range +Vs	10 ... 30 VDC
Current consumption max. (no load)	45 mA
Voltage drop Vd	< 3 VDC

**Electrical data**

Output circuit	Push-pull
Output current	< 100 mA
Short circuit protection	Yes
Reverse polarity protection	Yes

**Communication interface**

Interface	IO-Link V1.1
Baud rate	38,4 kBaud (COM 2)
Cycle time	≥ 2,7 ms
Process data length	3 Byte
Process data structure	Bit 0 = BDC1 Bit 2 = quality Bit 3 = alarm Bit 8-23 = 16 Bit measurement

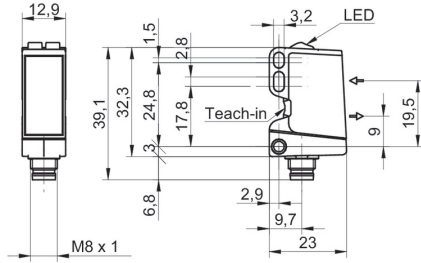
**Mechanical data**

Width / diameter	12,9 mm
Height / length	32,3 mm
Depth	23 mm
Type	Rectangular
Housing material	Plastic (ASA, PMMA)
Front (optics)	PMMA
Connection types	Connector M8 4 pin

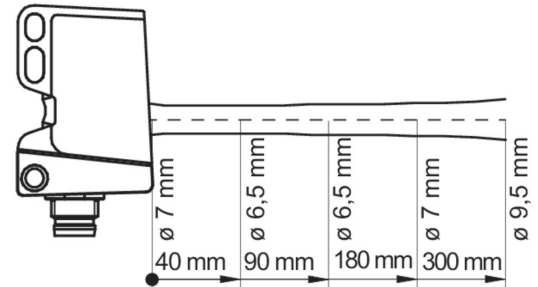
**Ambient conditions**

Operating temperature	-25 ... +60 °C
Protection class	IP 67

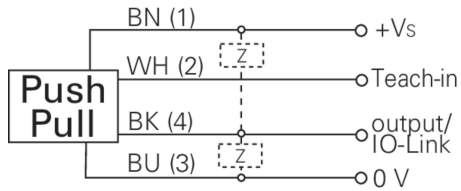
**Dimension drawing**



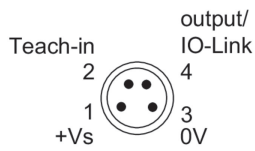
**Beam characteristic (typically)**



**Connection diagram**



**Pin assignment**



**Resolution**

