

Overview

- Outstanding reliability and unrivalled immunity against ambient light
- Easy to adjust via line teach
- Intuitive Xpress Teach / 1-Step Teach method
- Robust housing with stainless steel spacer sleeves



Picture similar



Technical data

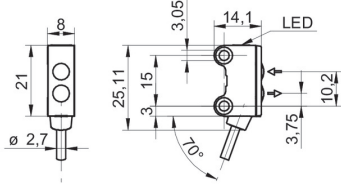
General data		Electrical data	
Type	Background suppression	Current consumption typ.	16 mA (@ 24 VDC)
Light source	Pulsed red LED	Voltage drop Vd	< 2 VDC
Sensing distance Tw	15 ... 80 mm	Output function	Dark operate
Sensing range Tb	7 ... 80 mm	Output circuit	Push-pull
Smallest object recognizable typ.	0,25 mm at 40 mm	Output current	< 50 mA
Alignment / soiled lens indicator	Flashing output indicator	Short circuit protection	Yes
Power on indication	LED green	Reverse polarity protection	Yes
Output indicator	LED yellow	Mechanical data	
Sensing distance adjustment	External Teach-in / 1-Step Teach-in	Width / diameter	8 mm
Wave length	644 nm	Height / length	25,1 mm
Suppression of reciprocal influence	Yes	Depth	14,1 mm
Alignment optical axis	< 1,5°	Type	Rectangular
Electrical data		Mechanical mounting	Sleeve smooth (stainless steel)
Response time / release time	< 1 ms	Housing material	Plastic (ASA, PMMA)
Voltage supply range +Vs	10 ... 30 VDC	Front (optics)	PMMA
Current consumption max. (no load)	20 mA (@ 30 VDC)	Connection types	Cable 4 pin, 2 m
		Cable characteristics	PVC / PVC 4 x 0,08 mm ²
		Ambient conditions	
		Protection class	IP 67
		Operating temperature	-25 ... +50 °C

O200.GR-GD1E.72CV/T007

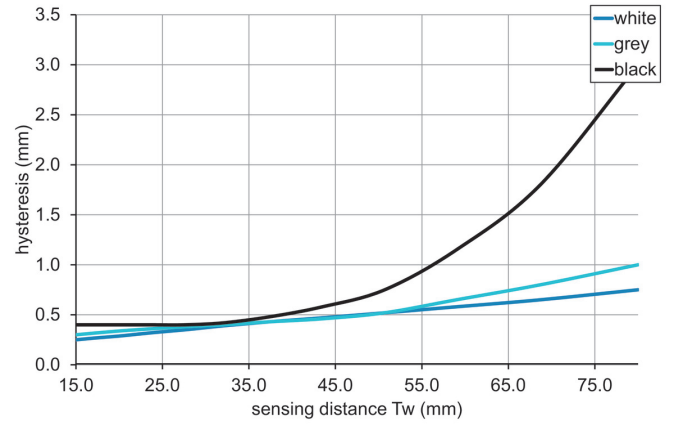
Diffuse sensors with background suppression - miniature

Article number: 11210574

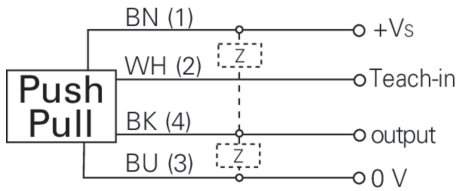
Dimension drawing



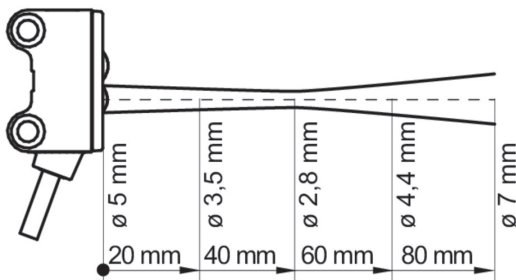
Hysteresis curve



Connection diagram



Beam characteristic (typically)



Sensing distance diagram

