

## O200.GR.F-NV1Z.72CV/H006\_BX15

Diffuse sensors with background suppression - miniature

Article number: 11210559

### Overview

- Outstanding reliability and unrivalled immunity against ambient light
- V-optics for detection of shiny or transparent objects
- Reproducible and color-independent switching distances
- Fixed preset for the simplest commissioning
- Quick mounting by means of M3 threaded bushes made of stainless steel



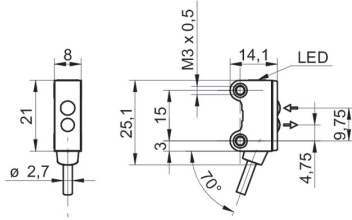
Picture similar



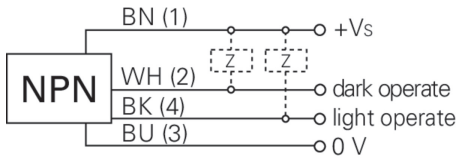
### Technical data

General data		Electrical data	
Type	Background suppression	Current consumption typ.	16 mA (@ 24 VDC)
Version	Fixed focus	Voltage drop Vd	< 2 VDC
Light source	Pulsed red LED	Output function	Light / dark operate
Sensing distance Tw	15 mm	Output circuit	NPN complementary
Sensing range Tb	3 ... 15 mm	Output current	< 50 mA
Smallest object recognizable typ.	0,05 mm at 10 mm	Short circuit protection	Yes
Alignment / soiled lens indicator	Flashing output indicator	Reverse polarity protection	Yes
Power on indication	LED green	Mechanical data	
Output indicator	LED yellow	Width / diameter	8 mm
Sensing distance adjustment	No	Height / length	25,1 mm
Wave length	644 nm	Depth	14,1 mm
Suppression of reciprocal influence	Yes	Type	Rectangular
Alignment optical axis	< 1,5°	Mechanical mounting	Threaded sleeves M3 (stainless steel)
Electrical data		Housing material	Plastic (ASA, PMMA)
Response time / release time	< 1 ms	Front (optics)	PMMA
Voltage supply range +Vs	10 ... 30 VDC	Connection types	Cable 4 pin, 2 m
Current consumption max. (no load)	20 mA (@ 30 VDC)	Cable characteristics	PVC / PVC 4 x 0,08 mm <sup>2</sup>
		Ambient conditions	
		Protection class	IP 67
		Operating temperature	-25 ... +50 °C

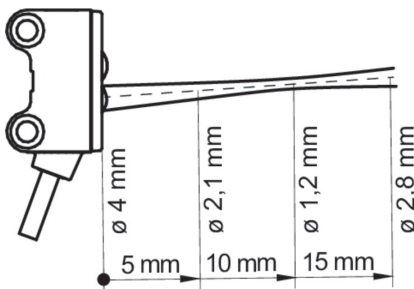
**Dimension drawing**



**Connection diagram**



**Beam characteristic (typically)**



**Sensing distance diagram**

