

Overview

- 2 mm
- NPN make function (NO)
- flylead connector M8
- -25 ... 75 °C
- IP 67



Picture similar



Technical data

General data

Mounting type	Flush
Nominal sensing distance S _n	2 mm
Hysteresis	2 ... 20 % of S _r
Output indicator	LED red

Electrical data

Switching frequency	5 kHz
Voltage supply range +V _s	6 ... 30 VDC
Current consumption max. (no load)	12 mA
Output circuit	NPN make function (NO)
Voltage drop V _d	< 2 VDC
Output current	< 100 mA
Short circuit protection	Yes
Reverse polarity protection	Yes

Mechanical data

Type	Rectangular
Material (sensing face)	PBT
Housing material	Die-cast zinc nickel plated
Dimension	8 mm
Housing length	16 mm

Mechanical data

Connection types	Flylead connector M8
Tightening torque max.	0.8 Nm

Ambient conditions

Operating temperature	-25 ... +75 °C
Protection class	IP 67

Cable

Head A: Connection	M8
Head A: Gender	Male
Head A: Angle cable outlet	0°
Head A: Coding	A
Head A: No. of poles	3
Head A: Degree of protection	IP65, IP66K, IP67
Cable length	200 mm
Length tolerance	+ 10 % - 0 %
Shielded	No
External sheath: Material	PVC
Cable diameter	2.4 mm
AWG	28
Wire cross section	0.08 mm ²

IFFM 08N17A6/KS35L

Inductive proximity switch - subminiature

Article number: 10143588

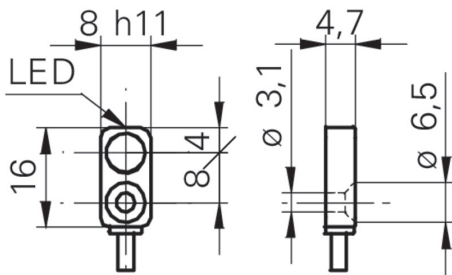
Remarks

- Extra flat housing
- Through bore for M3 screw
- Standard cable length 200 mm

Pin assignment

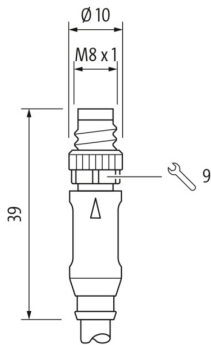


Dimension drawing



- Standard cable length 200 mm (L)

Dimensions connector



Connection diagram

