

### Overview

- 2 mm
- NAMUR
- spade lug
- -25 ... 75 °C
- IP 67



Picture similar



### Technical data

#### General data

Mounting type	Non-flush
Nominal sensing distance S <sub>n</sub>	2 mm

#### Electrical data

Switching frequency	< 5 kHz
Normal operating voltage	8,2 VDC
Voltage supply range +Vs	5 ... 30 VDC
Current consumption un- damped	> 4 mA
Current consumption damped	< 1 mA
Current consumption max. (no load)	10 mA

#### Electrical data

Output circuit	NAMUR
Residual ripple	< 10 % Vs

#### Mechanical data

Type	Rectangular
Housing material	PBT
Dimension	10 mm
Housing length	27,8 mm
Connection types	Spade lug

#### Ambient conditions

Operating temperature	-25 ... +75 °C
Protection class	IP 67

### Remarks

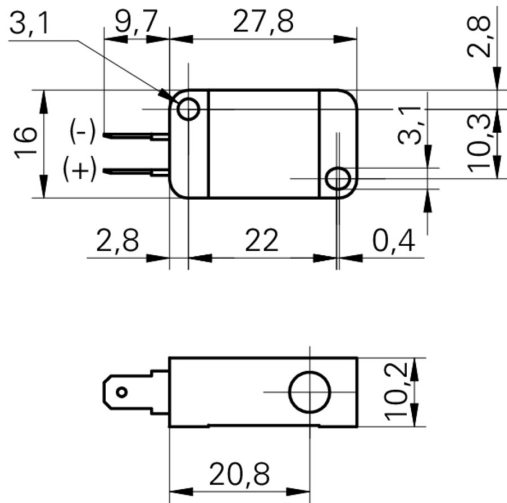
- Spade plug: IFFK 10 4,8 x 0,5 mm

# IFFK 10E9101

Inductive sensors NAMUR

Article number: 10140876

## Dimension drawing



## Connection diagram

